

Aluquick



ALUQUICK
Clamping System

40 WITTE WOF
YEARS 1969-2009
WORLD OF
FIXTURING

ALUQUICK Clamping System

**Minimized components,
maximized possibilities.**

The hallmark of traditional fixturing systems is the large number of different single components. In the past comprehensive sets were always indispensable to achieve high flexibility. ALUQUICK is different!

Less is more.

A compact number of intelligent components guarantee an almost individual application possibility.

Compatibility to other Witte systems as well as comprehensive property rights make ALUQUICK unique.



Frame type Aluquick fixture,
fixtures can also be mounted on grid plates

Attention:

All information on our products, especially pictures, drawings, dimensions or characteristics as well as other technical details are to be regarded as approximate average values. We reserve the right to make changes in design, technical data, dimensions and weights. The norms stated, similar technical guidelines as well as technical information, descriptions and pictures of the product are valid at time of printing. In addition our current, valid general terms and conditions are binding and our quotations are decisive

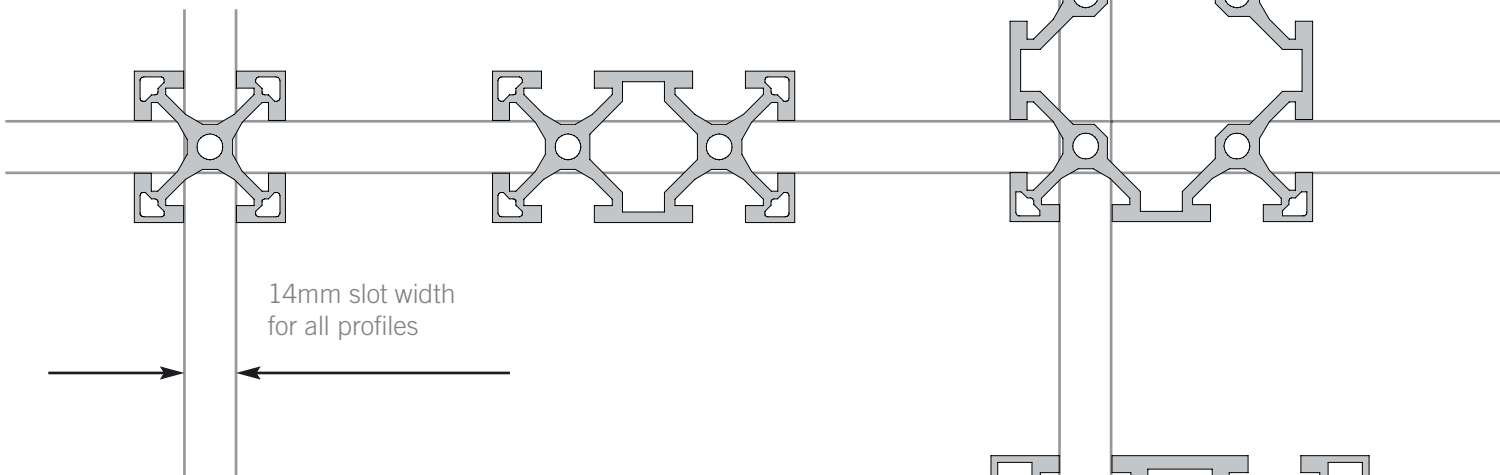
Connections on six sides

Aluquick Profiles

- No further machining required
- One slot width for all profile cross sections, therefore only one size connectors required
- Slot geometry for tight connections
- Face end slot and/or thread for repeatability
- Outer dimensions are multiple of grid size
- Compatible with Alufix Classic
- Grid as fitted hole or with thread
- Available without grid if required

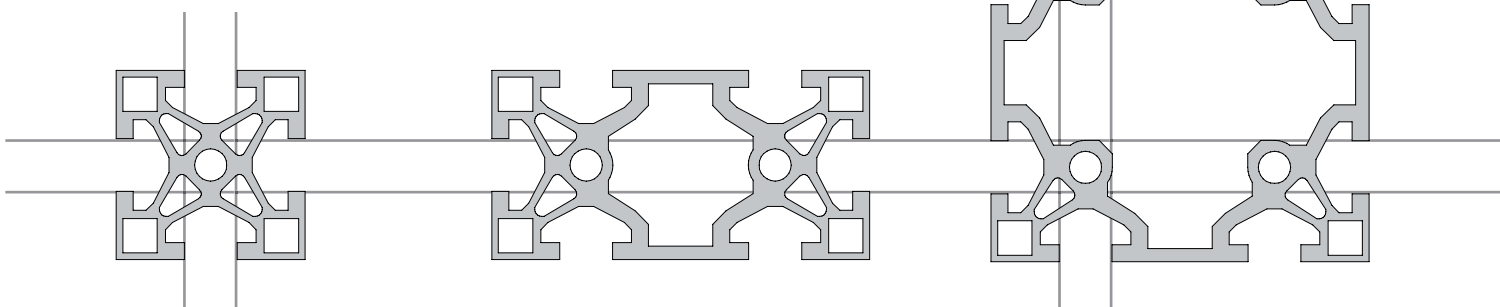
ALUQUICK 40

Cross section: 40x40mm (only for struts), 40x80mm, 80x80mm



ALUQUICK 50

Cross section: 50x50mm, 50x100mm, 100x100mm



Technical data, ALUQUICK Profile 50x50

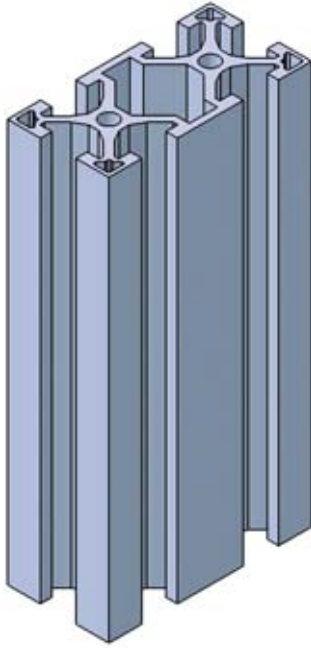
Material Aluminium F25, C35, anodized black
 Resisting torque $W_x = W_y: 8,02\text{cm}^3$
 Moment of inertia $I_x = I_y: 20,00\text{cm}^4$
 Geometrical moment of inertia against torque $I_t: 4,80\text{cm}^4$

Dimensions and tolerances for all ALUQUICK profiles

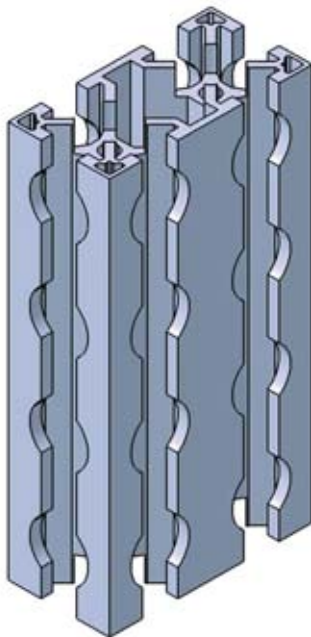
Length: 100 mm to 6000 mm js10
 Grid distance: $.50 \pm 0,02$ mm
 Grid holes: $\varnothing 23\text{h}8$ (M24x1 on request)
 Slot width and depth: 14 mm
 Straightness: 1,5mm / 2000mm
 Torsion: 1,2mm / 2000mm
 Parallelism: 0,2mm / 6000mm

ALUQUICK Profiles 40x80

With face end threads M8



ALUQUICK profile
40x80 without grid



ALUQUICK profile
40x80 with grid 40 mm

AQ40 profiles are available in steps of 40mm and in lengths from 40mm to 3000mm, other lengths on request.

Standard colour is **black**, other colours on request

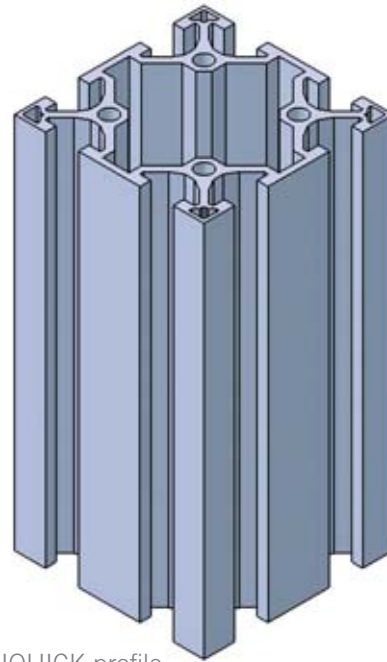
Grid holes can be threaded on request.

Length	40x80	40x80
	without grid	with grid
40	59465-1	59774-1
80	59466-1	59775-1
120	59467-1	59776-1
160	59468-1	59777-1
200	59469-1	59778-1
240	59470-1	59779-1
280	59471-1	59780-1
320	59472-1	59781-1
360	59473-1	59782-1
400	59474-1	59783-1
440	59475-1	59784-1
480	59476-1	59785-1
520	59477-1	59786-1
560	59478-1	59787-1
600	59479-1	59788-1
640	59480-1	59789-1
680	59566-1	59790-1
720	59567-1	59791-1
760	59568-1	59792-1
800	59569-1	59793-1
840	59570-1	59794-1
880	59571-1	59795-1
920	59572-1	59796-1
960	59573-1	59797-1
1000	59574-1	59798-1
1080	59576-1	59800-1
1160	59578-1	59802-1
1200	59579-1	59803-1
1240	59580-1	59804-1
1280	59581-1	59805-1
1320	59582-1	59806-1
1400	59584-1	59808-1
1520	59587-1	59811-1
1600	59589-1	59813-1
1680	59591-1	59815-1
1760	59593-1	59817-1
1800	59594-1	59818-1
1920	59597-1	59821-1
2000	59599-1	59823-1
2080	59601-1	59825-1
2160	59603-1	59827-1
2200	59604-1	59828-1
2280	59606-1	59830-1
2360	59608-1	59832-1
2400	59609-1	59833-1
2520	59612-1	59836-1
2760	59618-1	59842-1
2800	59619-1	59843-1
2880	59621-1	59845-1
2960	59623-1	59847-1
3000	59624-1	59848-1

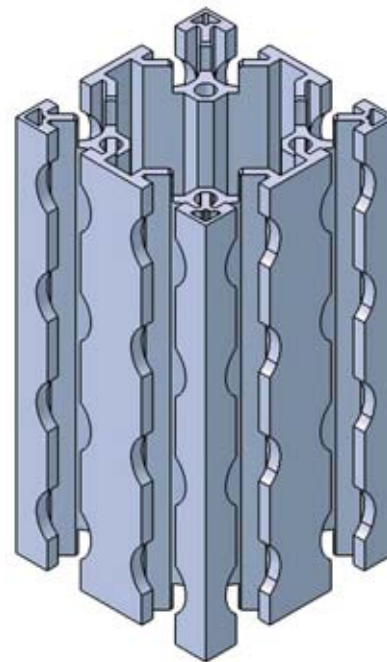
ALUQUICK Profiles 80 x 80

With face end threads M8

Length	80x80	
	without grid	with grid
40	59481-1	
80	59482-1	59295-1
120	59483-1	59625-1
160	59484-1	59264-1
200	59485-1	59626-1
240	59486-1	59627-1
280	59487-1	59302-1
320	59488-1	59628-1
360	59489-1	59629-1
400	59490-1	59630-1
440	59491-1	59631-1
480	59492-1	59301-1
520	59493-1	59632-1
560	59494-1	59297-1
600	59495-1	59633-1
640	59496-1	59298-1
680	59507-1	59634-1
720	59508-1	59300-1
760	59509-1	59635-1
800	59510-1	59269-1
840	59511-1	59636-1
880	59512-1	59270-1
920	59513-1	59637-1
960	59514-1	59638-1
1000	59515-1	59639-1
1080	59517-1	59640-1
1160	59519-1	59642-1
1200	59520-1	59643-1
1240	59521-1	59644-1
1280	59522-1	59645-1
1320	59523-1	59646-1
1400	59525-1	59648-1
1520	59528-1	59650-1
1600	59530-1	59341-1
1680	59532-1	59653-1
1760	59534-1	59655-1
1800	59535-1	59656-1
1920	59538-1	59659-1
2000	59540-1	59661-1
2080	59542-1	59663-1
2160	59544-1	59665-1
2200	59545-1	59666-1
2280	59547-1	59668-1
2360	59549-1	59670-1
2400	59550-1	59671-1
2520	59553-1	59674-1
2760	59559-1	59680-1
2800	59560-1	59681-1
2880	59562-1	59683-1
2960	59564-1	59685-1
3000	59565-1	59686-1



ALUQUICK profile
40x80 without grid



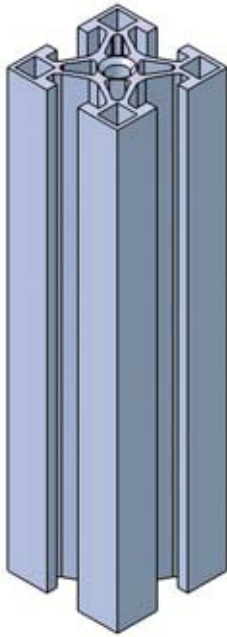
ALUQUICK profile
40x80 with grid 40 mm

AQ40 profiles are available in steps of 40mm and in lengths from 40mm to 3000mm, other lengths on request.

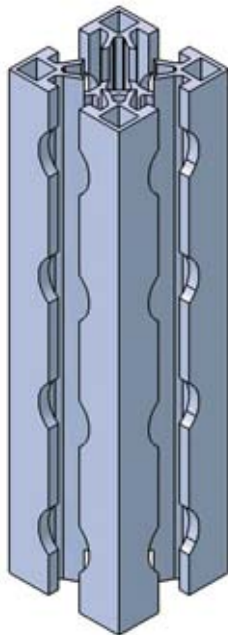
Standard colour is **black**, other colours on request
Grid holes can be threaded on request.

ALUQUICK Profiles 50 x 50

With face end threads M10



ALUQUICK Profil
50x50 without grid



ALUQUICK profile
50x50 with grid 50 mm

AQ50 profiles are available in steps of 50mm and in lengths from 50mm to 3000mm, other lengths on request.

Standard colour is **black**, other colours on request

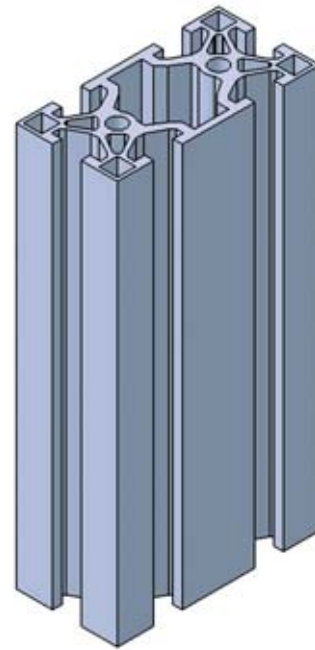
Grid holes can be threaded on request.

	50x50	50x50
Length	without grid	with grid
50	59407-1	121388-1
100	59409-1	121390-1
150	59411-1	121392-1
200	59413-1	121394-1
250	59415-1	121396-1
300	59417-1	121398-1
350	59419-1	121400-1
400	59421-1	121402-1
450	59423-1	121404-1
500	59425-1	121406-1
600	59429-1	121410-1
650	59431-1	121412-1
700	59433-1	121414-1
750	59435-1	121416-1
800	59437-1	121418-1
850	59439-1	121420-1
900	59440-1	121422-1
950	59441-1	121424-1
1000	59442-1	121426-1
1050	59443-1	121428-1
1100	59444-1	121430-1
1150	59445-1	121432-1
1200	59446-1	121434-1
1250	59447-1	121436-1
1300	59449-1	121438-1
1350	59450-1	121440-1
1400	59451-1	121442-1
1450	59452-1	121444-1
1500	59453-1	121446-1
1550	59454-1	121448-1
1600	59455-1	121450-1
1650	59702-1	121452-1
1700	59704-1	121454-1
1750	59706-1	121456-1
1800	59708-1	121458-1
1850	59710-1	121460-1
1900	59712-1	121462-1
1950	59714-1	121464-1
2000	59716-1	121466-1
2500	59736-1	121486-1
3000	59756-1	121506-1

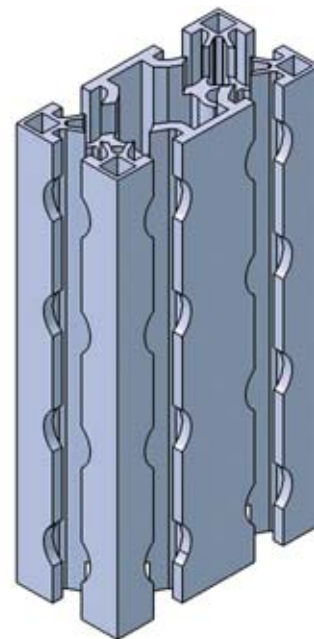
ALUQUICK Profiles 50 x 100

With face end threads M10

Length	50x100 without grid	50x100 with grid
50	121150-1	121507-1
100	121152-1	121509-1
150	121154-1	121511-1
200	121156-1	121513-1
250	121158-1	121515-1
300	121160-1	121517-1
350	121162-1	121519-1
400	121164-1	121521-1
450	121166-1	121523-1
500	121168-1	121525-1
600	121172-1	121529-1
650	121174-1	121531-1
700	121176-1	121533-1
750	121178-1	121535-1
800	121180-1	121537-1
850	121182-1	121539-1
900	121184-1	121541-1
950	121186-1	121543-1
1000	121188-1	121545-1
1050	121190-1	121547-1
1100	121192-1	121549-1
1150	121194-1	121551-1
1200	121196-1	121553-1
1250	121198-1	121555-1
1300	121200-1	121557-1
1350	121202-1	121559-1
1400	121204-1	121561-1
1450	121206-1	121563-1
1500	121208-1	121565-1
1550	121210-1	121567-1
1600	121212-1	121569-1
1650	121214-1	121571-1
1700	121216-1	121573-1
1750	121218-1	121575-1
1800	121220-1	121577-1
1850	121224-1	121579-1
1900	121224-1	121581-1
1950	121226-1	121583-1
2000	121228-1	121585-1
2500	121248-1	121605-1
3000	121268-1	121625-1



ALUQUICK profile
50x100 without grid



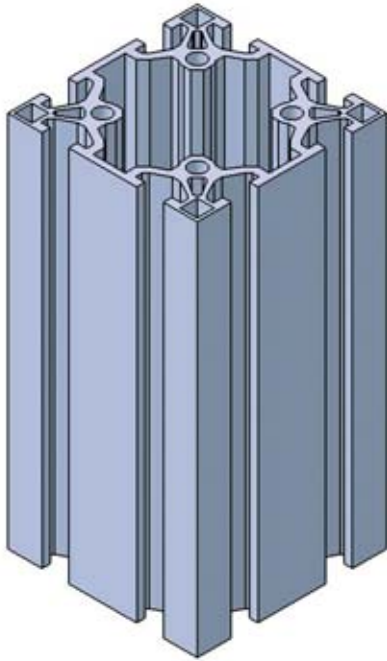
ALUQUICK profile
50x100 with grid 50 mm

AQ50 profiles are available in steps of 50mm and in lengths from 50mm to 3000mm, other lengths on request.

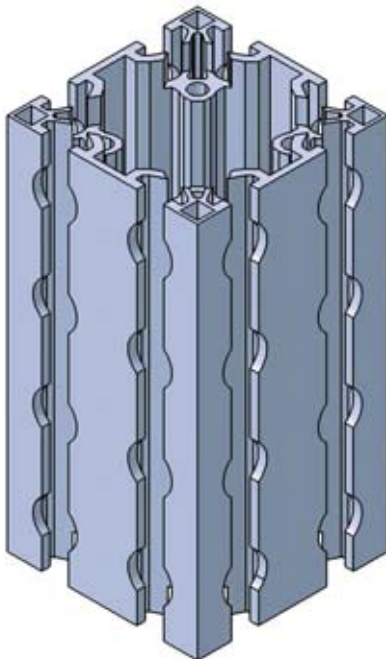
Standard colour is **black**, other colours on request
Grid holes can be threaded on request.

ALUQUICK Profiles 100 x 100

With face end threads M10



ALUQUICK profile
100x100 without grid



ALUQUICK profile
100x100 with grid 50 mm

AQ50 profiles are available in steps of 50mm and in lengths from 50mm to 3000mm, other lengths on request.

Standard colour is **black**, other colours on request

Grid holes can be threaded on request.

Length	100x100 without grid	100x100 with grid
50	121269-1	121626-1
100	121271-1	121628-1
150	121273-1	121630-1
200	121275-1	121632-1
250	121277-1	121634-1
300	121279-1	121636-1
350	121281-1	121638-1
400	121283-1	121640-1
450	121285-1	121642-1
500	121287-1	121644-1
600	121291-1	121648-1
650	121293-1	121650-1
700	121295-1	121652-1
750	121297-1	121654-1
800	121299-1	121656-1
850	121301-1	121658-1
900	121303-1	121660-1
950	121305-1	121662-1
1000	121307-1	121664-1
1050	121309-1	121666-1
1100	121311-1	121668-1
1150	121313-1	121670-1
1200	121315-1	121672-1
1250	121317-1	121674-1
1300	121319-1	121676-1
1350	121321-1	121678-1
1400	121323-1	121680-1
1450	121325-1	121682-1
1500	121327-1	121684-1
1550	121329-1	121686-1
1600	121331-1	121688-1
1650	121333-1	121690-1
1700	121335-1	121692-1
1750	121337-1	121694-1
1800	121339-1	121696-1
1850	121341-1	121698-1
1900	121343-1	121700-1
1950	121345-1	121702-1
2000	121347-1	121704-1
2500	121367-1	121724-1
3000	121387-1	121744-1

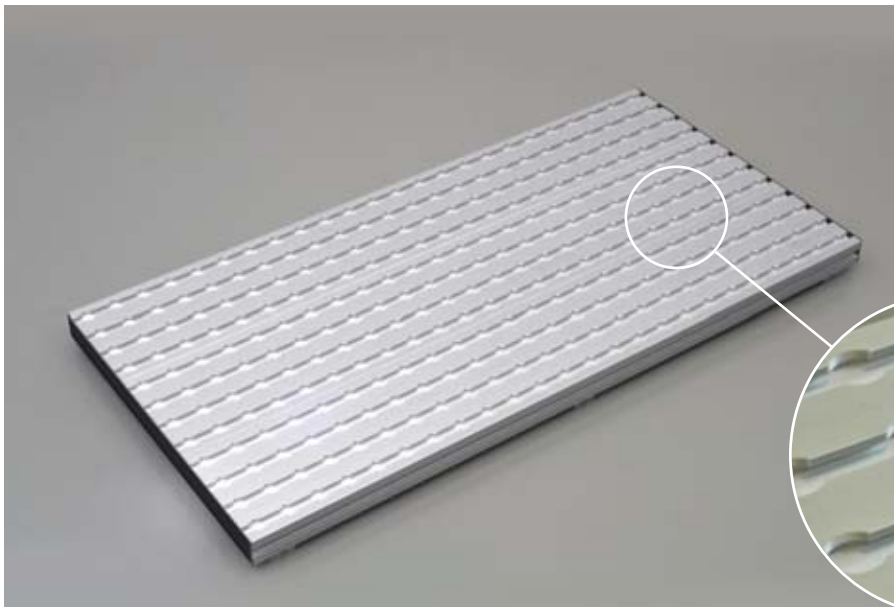
ALUQUICK Grid base plates

Width mm	Length mm	with grid 50 No.	without grid No.
200	400	99453-1	99462-1
200	600	99454-1	99463-1
200	800	99455-1	99464-1
400	600	99456-1	99465-1
600	800	99457-1	99466-1
600	1000	99458-1	99467-1
600	1200	98910-1	99468-1
800	1200	99459-1	99469-1
800	1600	99460-1	99470-1
800	2000	99461-1	99471-1

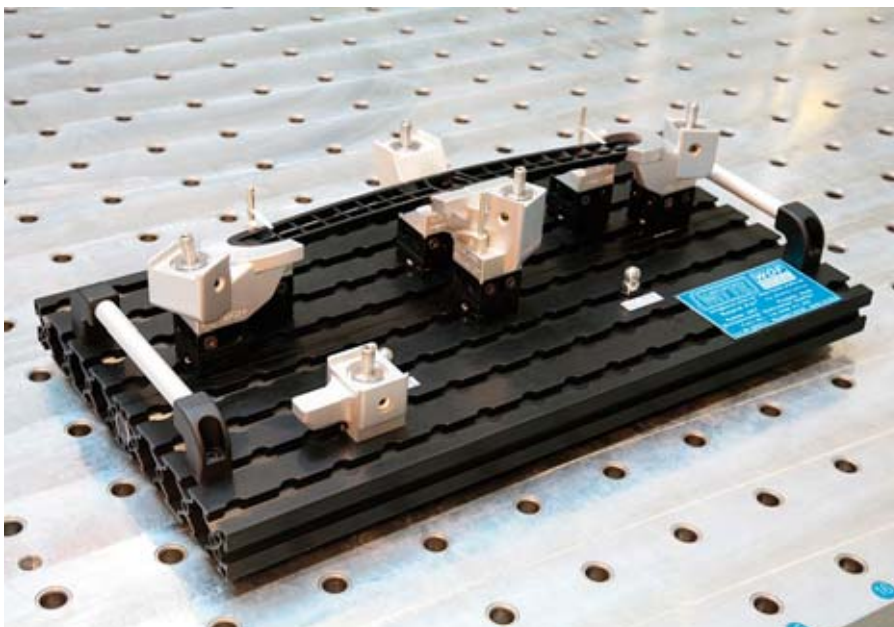
Other dimensions on request

strong and light.

Aluquick Grid base plates are made of Aluquick profiles 200mm wide joined together. They correspond to AQ profiles in material, dimensions, slot, grid and connection technology.

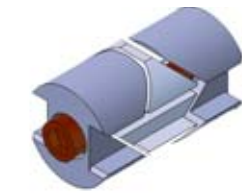


Aluquick grid base plate 600x1200, with grid 50, item No. 98910 (98910-1 in black)

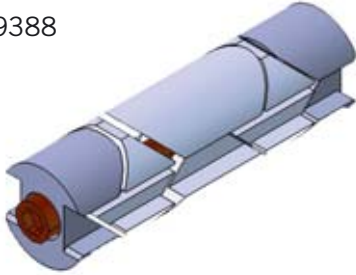


Combined measuring fixture and gauge for plastic parts

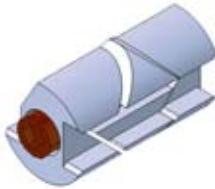
ALUQUICK Connection elements



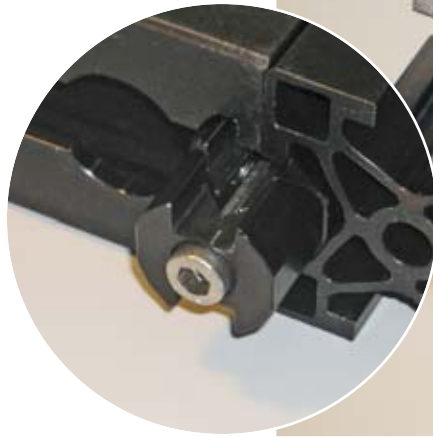
99388



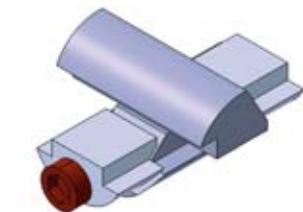
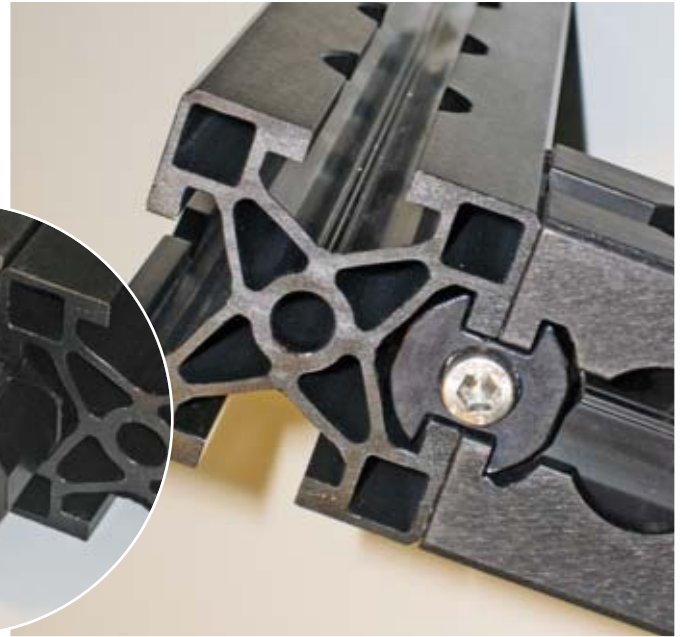
99446



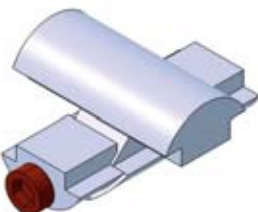
99452



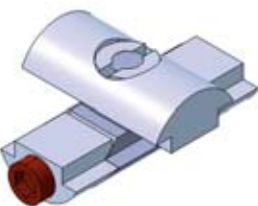
Item No.	Name	Length
99388	AQ Connector, to clamp	50
99446	AQ Connector, to clamp	100
99452	AQ Connector, to clamp and rotate	50



99772



99354



99535

Item No.	Name	Dim
99772	AQ Cross connector, to clamp and swivel	50x50
99354	AQ Cross connector, to clamp	50x50
99535	AQ Cross connector, to clamp and rotate	50x50

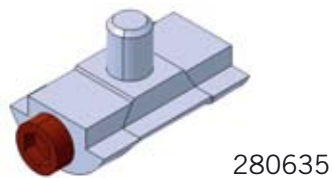
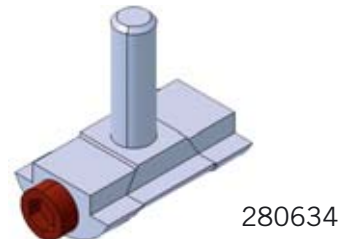
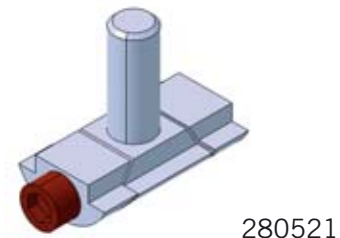


Aluquick cross connector No. 99354 face joining 2 profiles (one with face end T-slot), with grid, anodized natural

ALUQUICK Connection elements

for face connection

Item No.	Name	Dim
280635	Connector, AQ50, or face end clamping	M10x25/L=40
280634	Connector, AQ40, or face end clamping	M8x25/L=35
280521	Connector, AQ40, or face end clamping	M8x10/L=35 short



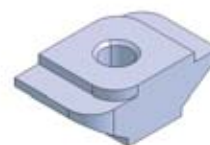
ALUQUICK Positioning elements

Item no.	Name	Dim
58913	AQ sleeve	∅ 23/M14x1,5
59867	AQ disk AQ/AF25	∅ 23/∅ 12,5 L=6, inner-∅ 8
59272	AQ disk AQ/AF40	∅ 23/M14x1,5 L=4
59321	AQ disk AQ/AF40	∅ 23/M14x1,5 L=10
59336	AQ ring AQ/AF40	∅ 23/∅20H7



ALUQUICK Swivel nuts

Item No.	Name	Dim
14989	AQ Swivel nut	M6
15002	AQ Swivel nut	M8



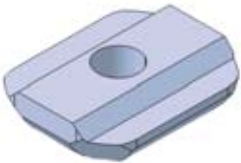
ALUQUICK
swivel nuts
slide into profiles
without grid.

14989
15002 Use with
swivel tool 15207
(see page 18)

ALUQUICK T slot nuts



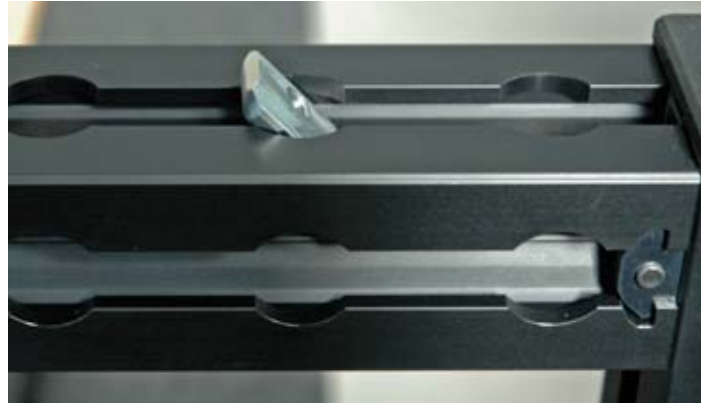
58957



58958

ALUQUICK T-slot nuts are used in grid profiles. They are particularly practical when face ends of profiles are inaccessible

Item No.	Name	Dim
58957	T slot nuts	M6
58958	T slot nuts	M8



Rapid Fit from Materialise

Alternative to milled aluminium contour parts for lighter parts



Witte offers conventionally milled custom-built components in aluminium. Alternatively when a really fast solution for lighter parts is required or when complicated part geometry and/or special contact situations (RPS fixations points, checking gages) are involved we may integrate rapid manufacturing expertise and RapidFit service from materialize.

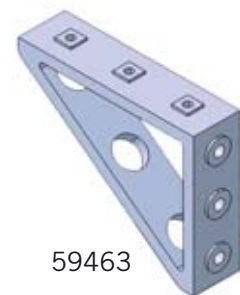
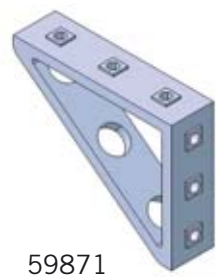
With their own RapidFit software, Materialise designs contact points which are then materialized by additive technologies like selective laser sintering (from a powdered basic thermoplastic material) or by fused deposition modelling (from real engineering thermoplastics).

ALUQUICK Support angles

Item No.	Name	Dim
15142	Support angle 40/50 Set	50x50
59354	Support brackets	40x80x100 without stud
59871	Support brackets	40x120x150 with stud Ø23 AQ 40
59355	Support brackets	40x120x150 with stud Ø23 AQ 40
59463	Support brackets	40x120x150 with stud Ø20 AQ 40

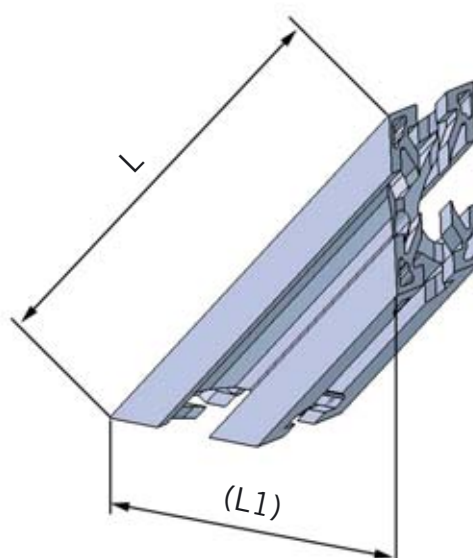


Support brackets for extra rigidity for profiles with or without grid or a combination



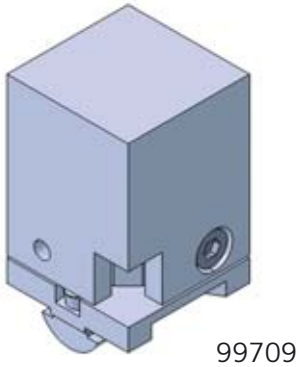
ALUQUICK Struts

No.	L1	L
59252-1	160	226
59293-1	200	282
59870-1	240	339
59253-1	280	395
59288-1	320	452
59872-1	360	509
59251-1	400	565
59873-1	440	622
59874-1	480	678.5
59254-1	520	735
59875-1	560	792
59876-1	600	848.5

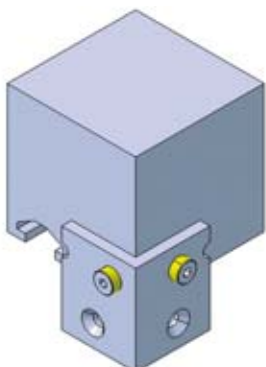
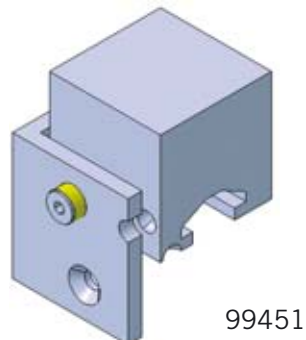
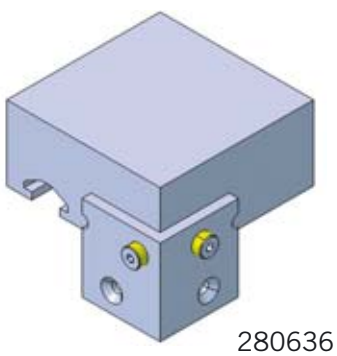
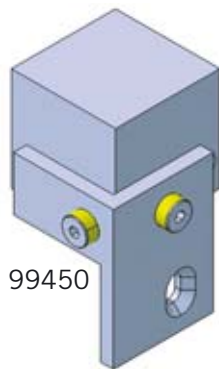
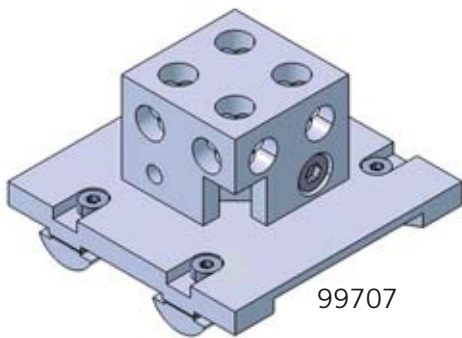


ALUQUICK Struts for extra rigidity on a larger scale

ALUQUICK Shim blocks



Item No.	Name	Dim
99596-1	3D-Shim block AQ50/AF25	h=50mm
99709-1	3D-Shim block AQ50 with contour block	h=75mm
99707-1	3D-Shim block reducer AQ100/AF25	h=50mm
99450-1	Shim block AQ50 complete, side mounting	50x50x50
99451-1	Shim block AQ50 complete, face mounting	50x50x50
280598-1	Shim block AQ40 complete, face mounting	80x80x80
280636-1	Shim block AQ50 complete, face mounting	50x100x100



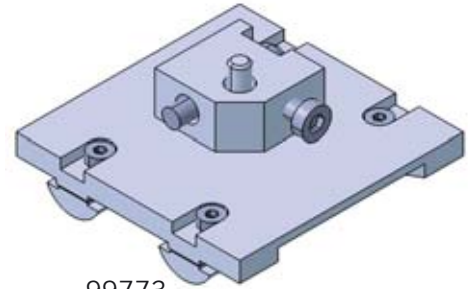
99451 Shim block with machined contour block for mounting Alufix standard top section

ALUQUICK Shim block base

Item No.	Name	Dim
99710-1	3D Shim block base complete with AQ50 shim foil	50x50
99773-1	3D Shim block base complete with AQ100 shim foil	100x100



99710



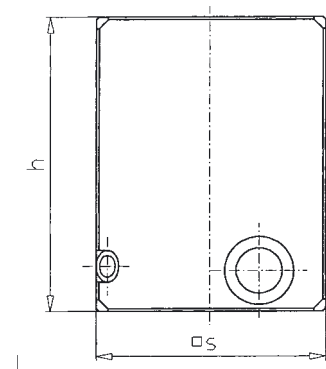
99773



Contour blocks for ALUQUICK 3D shim block

Item No.	Name	Dim (mm)
34768-1	Contour block for Shim block	50 x 50 x 65
34769-1	Contour block for Shim block	50 x 50 x 90

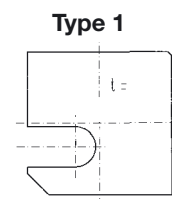
Weitere Abmessungen auf Anfrage



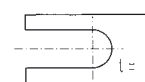
Shim foils for ALUQUICK 3D shim block

Item No.	Name	Dim (mm)
34446	Shim foil 1 for AQ 3D shim block	t = 1,5 for x
34447	Shim foil 2 for AQ 3D shim block	t = 1,5 for x, y

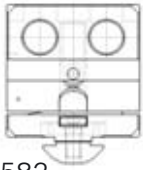
Steps of 2mm, peel thickness 0,05mm



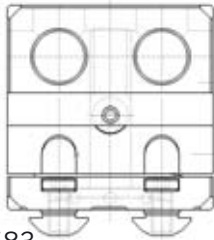
Type 2



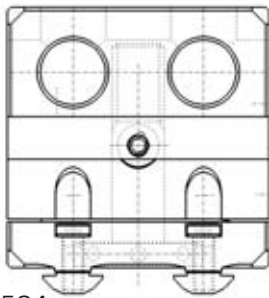
ALUQUICK 3D Adjustment blocks



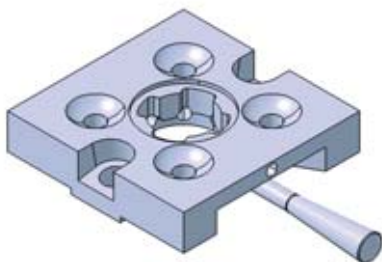
280582



280583



280584



280821

Item No.	Name	Dim
280582-1	3D Adjustment block AF25 with AQ connection	50x50x50?
280583-1	3D Adjustment block AF40 with AQ connection	80x80x80?
280584-1	3D Adjustment block AF50 with AQ connection	100x100x100
280821-1	Quick-exchange coupling for AQ50/AF25	50x50



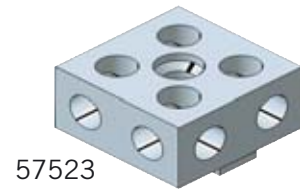
Frame type measuring fixture in ALUQUICK for roof mounted on a Witte sandwich plate



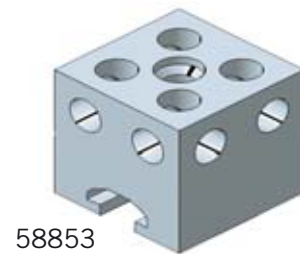
Instrument panel mounted on ALUQUICK 50x50 profiles with grid

ALUQUICK-ALUFIX 25 cross-overs

Item No.	Name	Dim
57523-1	AQ Cross-over plate AQ - AF25 with slot insert for use with T-slot nut or swivel nut	50 x 50 x 25
58853-1	AQ Cross-over plate AQ - AF25 with slot insert for use with T-slot nut or swivel nut (top surface) or AQ connectors (bottom surface)	50 x 50 x 50
99766-1	Connector set for No. 57523 comprising of: 1 countersunk screw M8x35 and 1 swivel nut M8	



57523

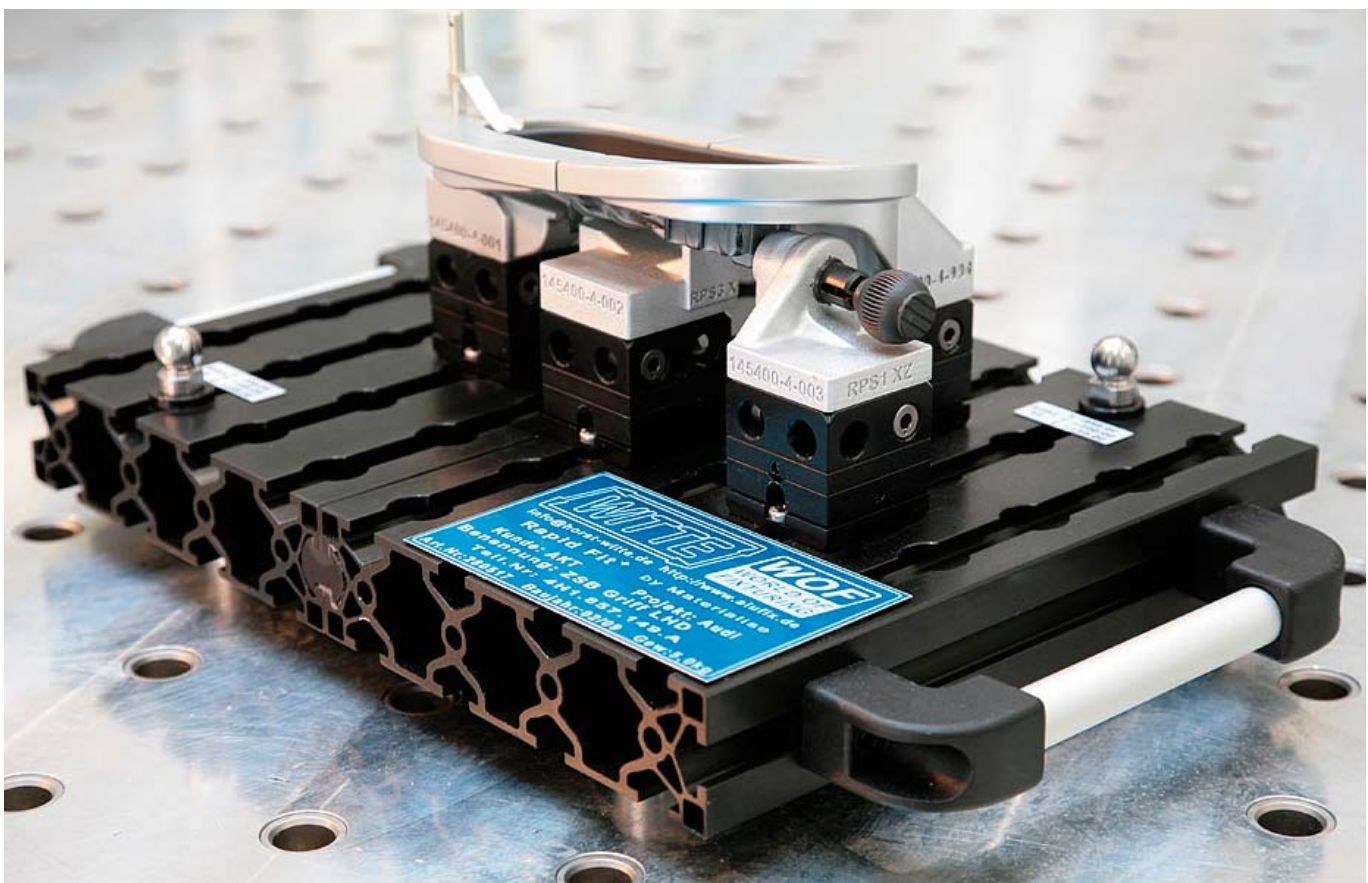


58853



Left to right:
 ALUQUICK profile cross-over - No. 57523 -
 ALUFIX Classic adjustment block mounted on an ALUQUICK profile 50x50mm with T slot end (see page 19)

Gauge in Aluquick



Accessories



15259

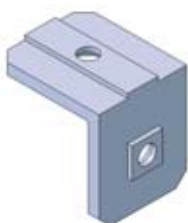


15260

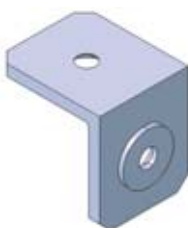


120205

Item No.	Name	Dim
15259	Mounting plate for hook eyes without thread	50 x 100
15260	Mounting plate for hook eyes with thread	50 x 100
15207	Swivel tool TIN 9990 (not shown)	
10589	Pin key DIN 911 (not shown)	5 mm
120205	Mounting ring	



58911



58912

ALUQUICK Assembly bracket

Item No.	Name	Dim
58911	AQ Assembly bracket with slot insert, simple	40 x 50 x 50
58912	AQ Assembly bracket with stud \varnothing 23 mm	40 x 50 x 50
99765	AQ Connector Set for Nos. 58911 and 58912, comprising 2 countersunk screws M8x16 and 2 swivel nuts M8	-

ALUQUICK assembly bracket 58911 with slot insert for off-grid positioning.

Assembly bracket 58912 with stud for positioning in grid.

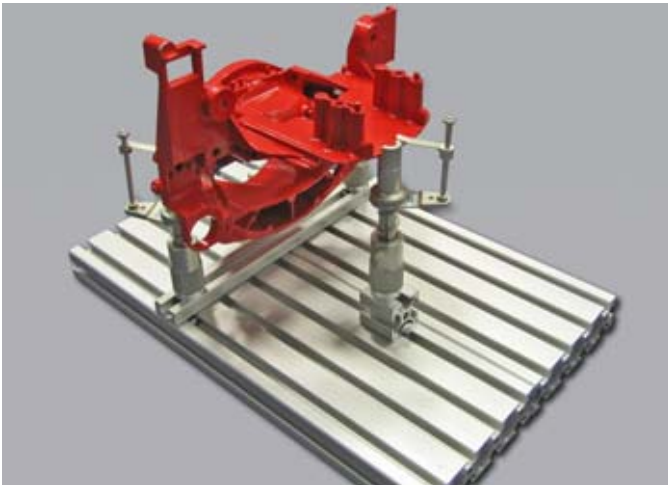
ALUQUICK Blind covers

and connectors



Artikel Nr.	Benennung	Dim
59855	AQ Blind cover for Aluquick profile AQ40	40x80
59854	AQ Blind cover for Aluquick profile AQ40	80x80
59851	AQ Blind cover for Aluquick profile AQ50	50x50
59853	AQ Blind cover for Aluquick profile AQ50	50x100
59852	AQ Blind cover for Aluquick profile AQ50	100x100
280838	Connecting items for blind covers AQ40	
280839	Connecting items for blind covers AQ50	

ALUQUICK Special profiles



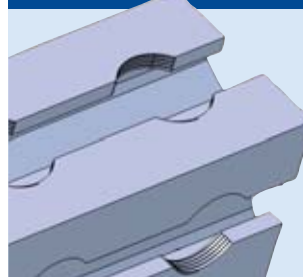
Fixture in AQC ALUQUICK Compact



Aircraft bottom panel, machined in our subcontracting division mounted on ALUQUICK Large in preparation for measuring.

ALUQUICK profiles are also available as AQC ALUQUICK Compact (system size 20) and AQL ALUQUICK Large. These profiles are not completely compatible to other Witte systems and for this reason are classified as special. Naturally both AQC and AQL system elements correspond to re-knowned Witte quality regarding material selection and manufacturing,

Grid holes with thread

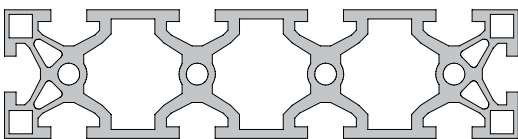


The grid holes in all ALUQUICK profiles are also available with thread M24x1 and enable adapter-free connection to ALUGRIP

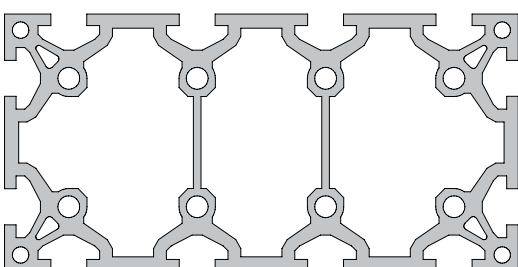
AQ Profile cross sections

Profile cross sections are also available in larger dimensions.

50x200



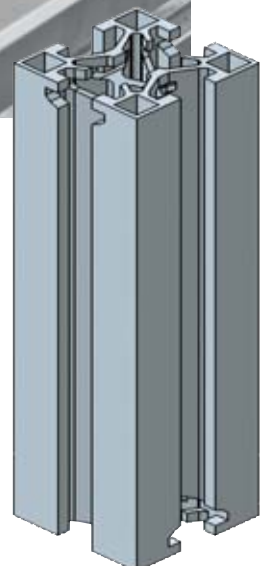
100x200

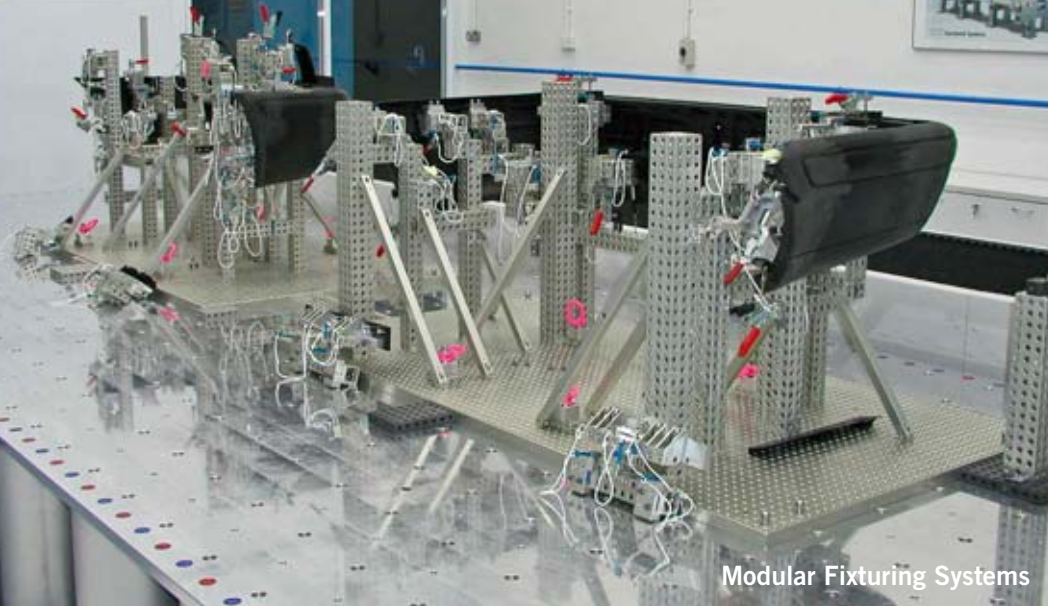


ALUQUICK profile with T-slot at face end and cross connector

Versatility

AQ profiles are available in a version with T-slots for face end connection. More details available on request.





Modular Fixturing Systems



Subcontracting



Vacuum clamping technology

Witte –
specialized in

**Modular
Fixturing Systems**

Subcontracting

**Vacuum clamping
technology**

Germany

Horst Witte Gerätebau

Barskamp KG

Horndorfer Weg 26-28

D-21354 Bleckede

Germany

Tel.: +49 (0)5854/89-0

Fax: +49 (0)5854/89-40

Email: info@horst-witte.de

www.horst-witte.de

Asia

Witte Far East Pte Ltd

1st. Level

13 Joo Koon Crescent

SGP-629021

Singapore

Tel.: +65-6248 5961

Fax: +65-6898 4542

Email: info@witteasia.com

www.witteasia.com

USA & Canada

Witte America

120E Market Street

Suite 455

Indianapolis, IN 46204.

Phone Number: 317-822-7003

Fax Number: 317-822-7009

Email: info@witteamerica.com

Web: www.witteamerica.com

Mexico

Horst Witte de Mexico

SA de CV

Ave Francisco Villa 3700

Local 8A

Chihuahua, Chih. Mex 31114

Tel.: +52-614-421-1063

Fax: +52-614-421-1064

Email: ventas@wittemexico.com

www.wittemexico.com



Witte Gerätebau Barskamp KG
ist zertifiziert nach

- DIN EN ISO 9001
- DIN EN ISO 9100
- QSF-A (Luft- und Raumfahrt Zulieferer)

