



Megalu components are also available anodized black for applications using contact-free measuring equipment. To order simply add "-1" to the Witte item number (i.e. 22950-1).

MEGALU

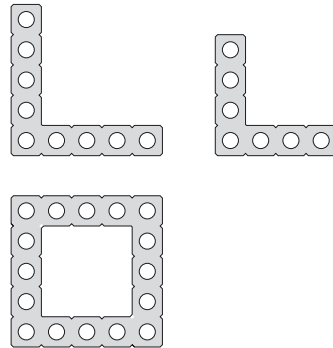
Economical Fixture building

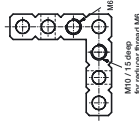
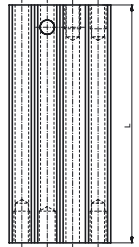
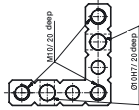
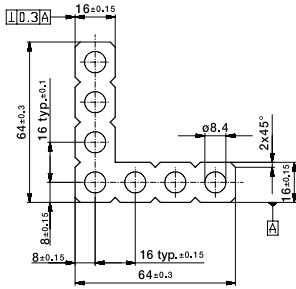
Megalu is an extruded profile. It is available in an L-shape as well as a boxed or square-shaped profile. Megalu profiles and connections are great for resisting torsion and bending forces.

Megalu was designed to be used throughout the whole of a fixture to ensure stable, repeatable work piece positioning.

Megalu is intended as a dedicated solution so fixture changes are not as easy or convenient as with other systems such as ALUFIX Classic.

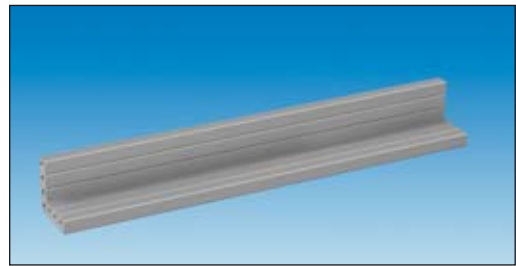
Megalu is a simple yet accurate and economical fixturing system.



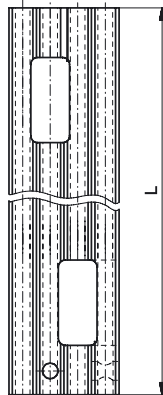
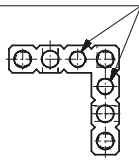
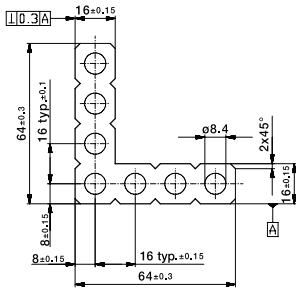


Megalu column, type C1 64x64mm
screwed from outside

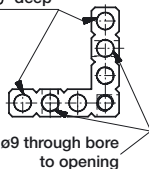
No.	L	g
371200	200	740
371250	250	930
371300	300	1110
371350	350	1300
371400	400	1490
371450	450	1670
371500	500	1860



ø9 through bore to opening



Ø10H7/25 deep



Megalu column, type C2 64x64mm
screwed from inside

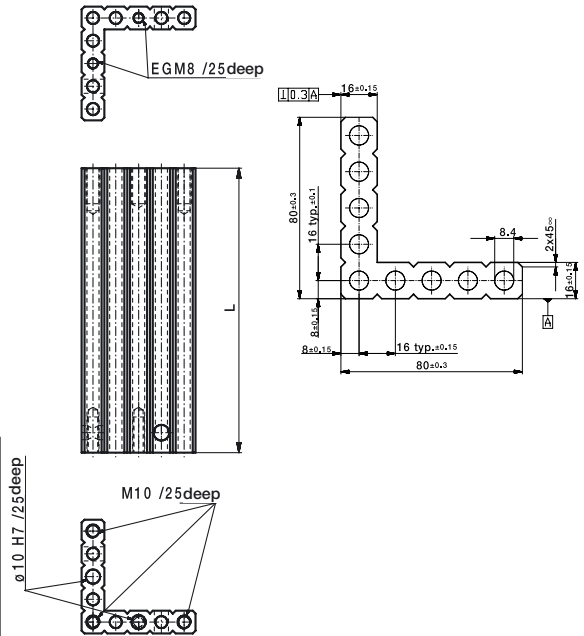
No.	L	g
372200	200	680
372250	250	850
372300	300	1020
372350	350	1190
372400	400	1360
372450	450	1530
372500	500	1700



Material: Alu F23. Further dimensions on request. Maximum length 3000 mm.

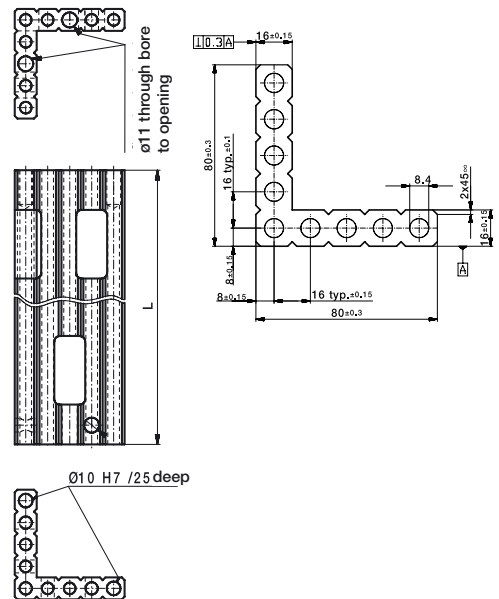
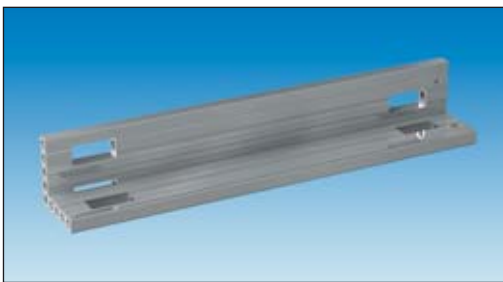
Megalu column, type C1 80x80mm
screwed from outside

No.	L	g
361200	200	950
361300	300	1420
361400	400	1890
361500	500	2360
361600	600	2830
361700	700	3310
361800	800	3780
361900	900	4250
361000	1000	4720

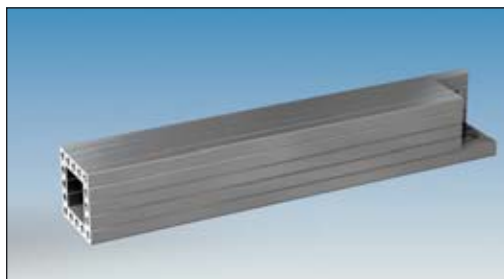
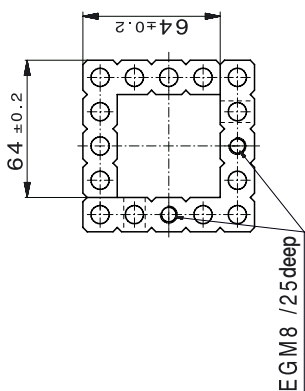
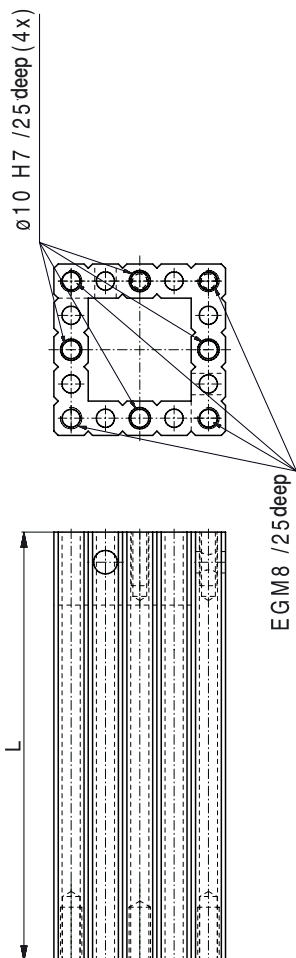


Megalu column, type C2 80x80mm
screwed from inside

No.	L	g
362200	200	880
362300	300	1310
362400	400	1750
362500	500	2180
362600	600	2630
362700	700	3070
362800	800	3500
362900	900	3940
362000	1000	4380



Material: Alu F23. Further dimensions on request. Maximum length 3000 mm.



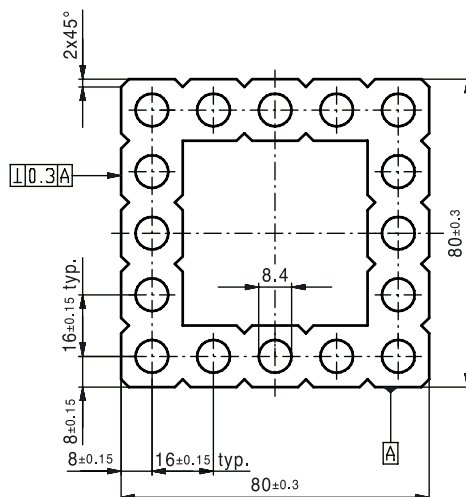
Megalu column, square

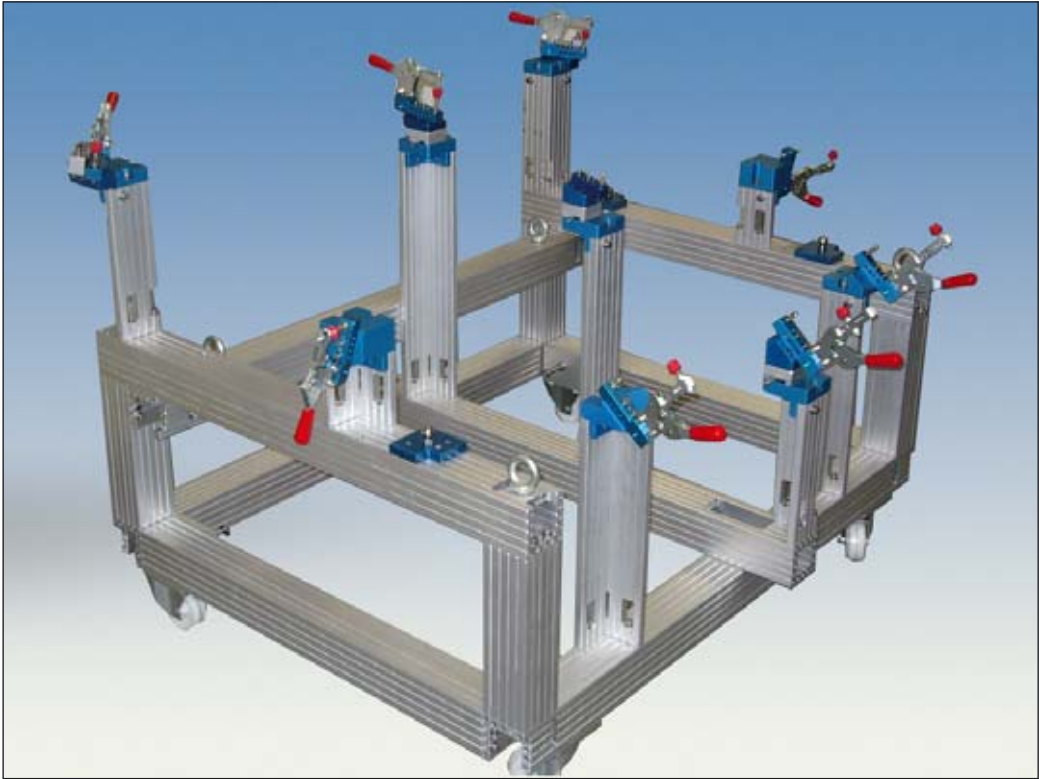
type C1 64x64mm

screwed from outside

No	L	g
381200	200	1600
381300	300	2520
381400	400	3470
381500	500	4320
381600	600	5160
381700	700	5890
381800	800	6940
381900	900	8020
381000	1000	9120

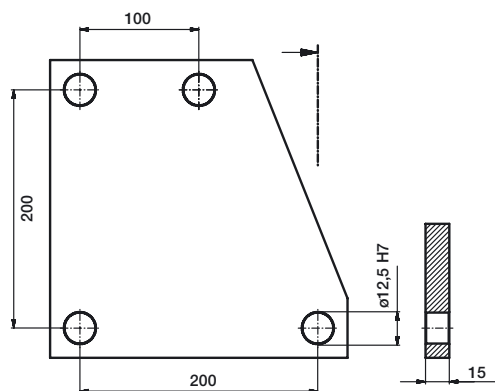
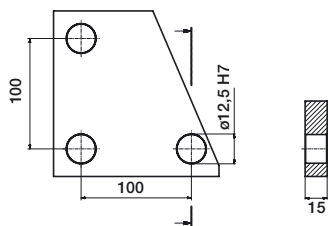
Material: Alu F23. Further dimensions on request. Maximum length 3000 mm.





Application sample of Megalu L- and square shaped profiles

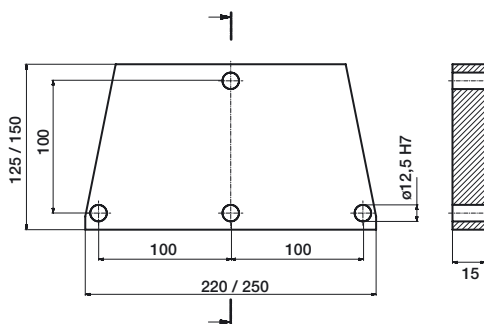




Footplate

(pre-machined)

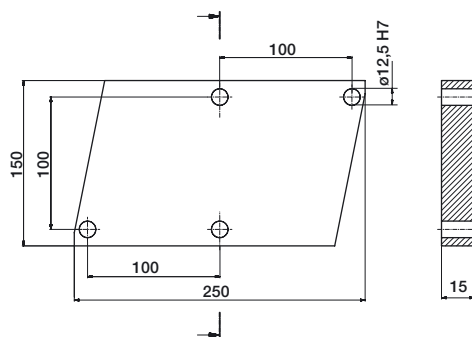
No.	Grid	Dim	g
358209	100	15x150x150	860
358849	200	15x250x250	2230



Footplate trapezium (pre-machined)

trapezium shaped for 2 columns

No.	Grid	Dim	g
358555	100	15x125x220	980
358248	200	15x150x250	1520



Footplate rhombus (pre-machined)

rhombus shaped for 2 columns

No.	Grid	Dim	g
358850	200	15x150x250	1320

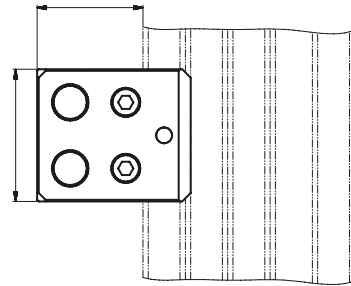
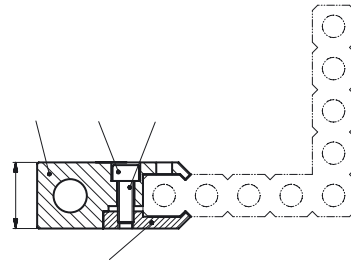
Customer can position Megalu columns and drill holes themselves.

Further dimensions on request.

AF 25 Adapter

for Megalu column

No.		g
94498		200

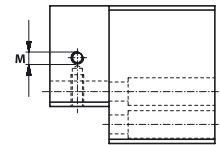
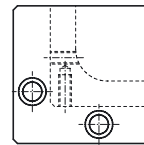
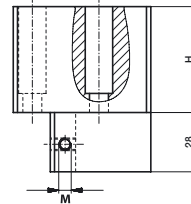


Megalu contour block C1,

Pre machined block C1 with ± 1 mm adjustment range. Screwed from above

No.	for column	Dim	g
355143	80x80 C1	H=50, M8	910
357295	65x65 C1	H=50, M6	620

Connection set on page 296 required

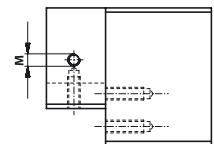
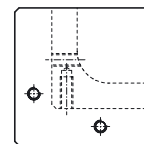
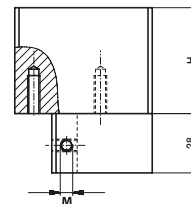


Megalu contour block C2,

Pre machined block C1 with ± 1 mm adjustment range. Screwed from inside

No.	for column	Dim	g
358857	80x80 C2	H=50, M8	940
357296	65x65 C2	H=50, M6	650

Connection set on page 296 required



**94974 Connection set****Megalu C1/80**

No.	Pcs.	Description
10140	4	Hex socket head sc. M8x30 DIN912 A2
12400	3	Hex socket head sc. M10 x 30 DIN6912 A2
10123	2	Cylinder pin 10x32 DIN 7
34449	2	Shim foil II 50x30x1,6/0,05 mm
54218	1	Shim foil 64x64x1,6/0,05 mm
11467	4	Washer 8,4 DIN 125 A2

94972 Connection set**Megalu C1/64**

No.	Pcs.	Description
12400	3	Hex socket head sc. M10 x 30 DIN6912 A2
10524	4	Hex socket head sc. M6x30 DIN 912
10123	2	Cylinder pin 10x32 DIN 7
34449	2	Shim foil II 50x30x1,6/0,05 mm
54218	1	Shim foil 64x64x1,6/0,05 mm
10066	4	Washer A6,4 DIN125-A ST

95340 Connection set**Megalu C2/80**

No.	Pcs.	Description
10140	2	Hex socket head sc. M8x30 DIN912 A2
10233	5	Hex socket head sc. M8 x 45 DIN912 A2
10123	2	Cylinder pin 10x32 DIN 7
34449	2	Shim foil II 50x30x1,6/0,05 mm
54218	1	Shim foil 64x64x1,6/0,05 mm
11467	4	Washer 8,4 DIN 125 A2

95342 Connection set**Megalu C2/64**

No.	Pcs.	Description
10233	2	Hex socket head sc. M8 x 45 DIN912 A2
10524	2	Hex socket head sc. M6 x 30 DIN 912
10607	2	Hex socket head sc. M6 x 45 DIN 912 A2
10123	2	Cylinder pin 10x32 DIN 7
34449	2	Shim foil II 50x30x1,6/0,05 mm
54218	1	Shim foil 64x64x1,6/0,05 mm
10066	4	Washer A6,4 DIN125-A ST