

# ALUFIX Open

## The fixturing system with open profile bars

Alufix Open has the same bore dimensions and distances between bores as Alufix classic. The reasoning behind this is that both systems are compatible.

The Open profiles enable very quick assembly in combination with Alufix Open connection elements and a further reduction in weight is also an added advantage.

Alufix Open uses reusable bars in U-form and L-form, these can be combined to form T-bars or square bars all available in either AF 25 and 40 system sizes.

Alufix Open is an economic alternative for making fixtures or can be used in combination with existing Alufix Classic fixtures and material

## ALUFIXCOLOR



Alufix components are also available anodized black for applications using contact-free measuring equipment. To order simply add "-1" to the Witte item number (i.e. 22950-1).



## AF 25 Open

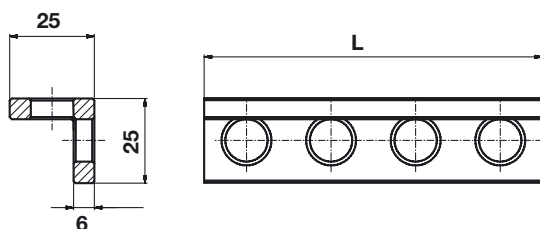
L - Profile

AF 25 Open, 25x25



No.	l	g	No.	l	g	No.	l	g
58450	50	20	58462	650	230	58474	1250	450
58451	100	40	58463	700	250	58475	1300	470
58452	150	50	58464	750	270	58476	1350	490
58453	200	70	58465	800	290	58477	1400	500
58454	250	90	58466	850	310	58478	1450	520
58455	300	110	58467	900	320	58479	1500	540
58456	350	130	58468	950	340	58480	1600	580
58457	400	140	58469	1000	360	58481	1700	610
58458	450	160	58470	1050	380	58482	1800	650
58459	500	180	58471	1100	400	58483	1900	680
58460	550	200	58472	1150	410	58484	2000	720
58461	600	220	58473	1200	430			

Further dimensions on request.



### Tolerances and characteristics:

Holes H8

Hole distance 0,02

Length dimension JS9

Material: Alu F 35

Surface protection:

anodized natural

Outer surfaces unmachined,



# AF 25 Open

L - Profile

AF 25 Open, 50x50

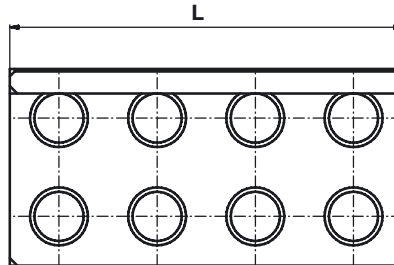
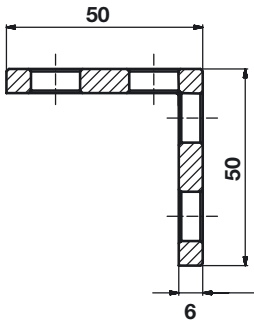


No.	l	g
58485	50	60
58486	100	120
58487	150	180
58488	200	240
58489	250	300
58490	300	360
58491	350	420
58492	400	480
58493	450	540
58494	500	600
58495	550	660
58496	600	720

No.	l	g
58497	650	780
58498	700	840
58499	750	900
58500	800	960
58501	850	1020
58502	900	1080
58503	950	1140
58504	1000	1200
58505	1050	1260
58506	1100	1320
58507	1150	1380
58508	1200	1440

No.	l	g
58509	1250	1500
58510	1300	1560
58511	1350	1620
58512	1400	1680
58513	1450	1740
58514	1500	1800
58515	1600	1920
58516	1700	2040
58517	1800	2160
58518	1900	2280
58519	2000	2400

Further dimensions on request.



**Tolerances and characteristics:**

- Holes H8
- Hole distance 0,02
- Length dimension JS9
- Material: Alu F 35
- Surface protection: anodized natural
- Outer surfaces unmachined,



## AF 25 Open

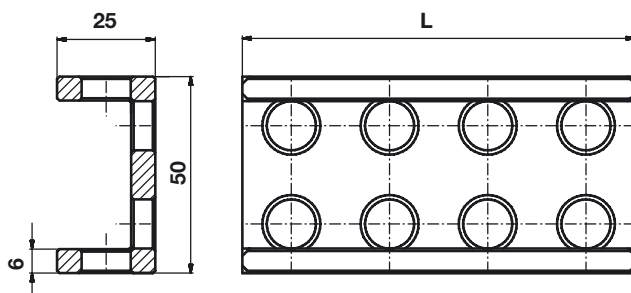
U - Profile

AF 25 Open, 25x50



No.	l	g	No.	l	g	No.	l	g
58520	50	60	58532	650	780	58544	1250	1500
58521	100	120	58533	700	840	58545	1300	1560
58522	150	180	58534	750	900	58546	1350	1620
58523	200	240	58535	800	960	58547	1400	1680
58524	250	300	58536	850	1020	58548	1450	1740
58525	300	360	58537	900	1080	58549	1500	1800
58526	350	420	58538	950	1140	58550	1600	1920
58527	400	480	58539	1000	1200	58551	1700	2040
58528	450	540	58540	1050	1260	58552	1800	2160
58529	500	600	58541	1100	1320	58553	1900	2280
58530	550	660	58542	1150	1380	58554	2000	2400
58531	600	720	58543	1200	1440			

Further dimensions on request.



### Tolerances

#### and characteristics:

Holes H8

Hole distance 0,02

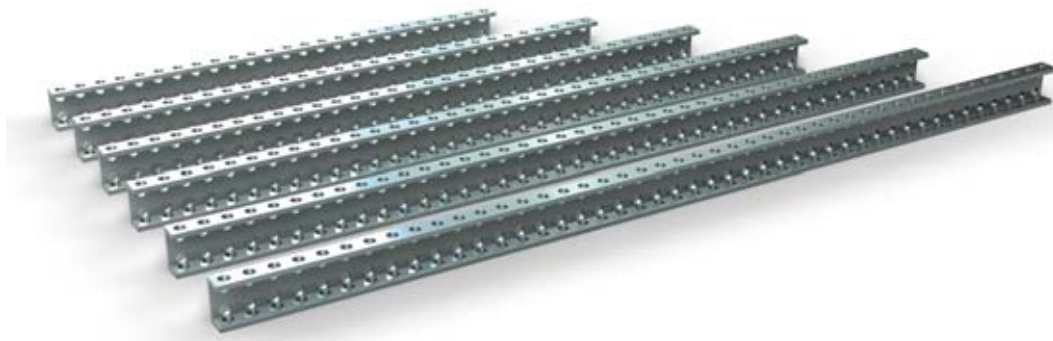
Length dimension JS9

Material: Alu F 35

Surface protection:

anodized natural

Outer surfaces unmachined,



# AF 25 Open

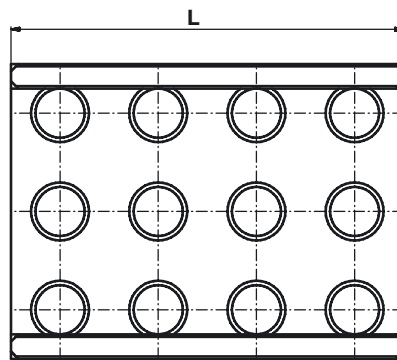
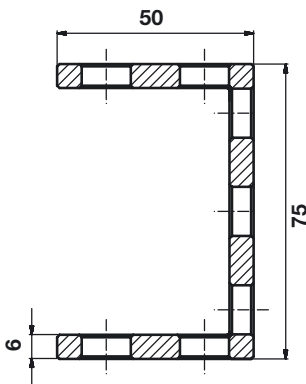
U - Profile

AF 25 Open, 50x75



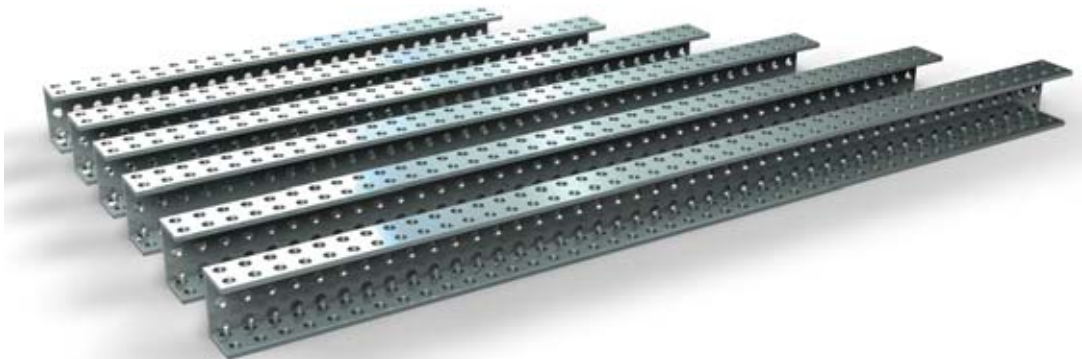
No.	l	g	No.	l	g	No.	l	g
58555	50	100	58567	650	1340	58579	1250	2580
58556	100	210	58568	700	1440	58580	1300	2680
58557	150	310	58569	750	1550	58581	1350	2780
58558	200	410	58570	800	1650	58582	1400	2880
58559	250	520	58571	850	1750	58583	1450	2990
58560	300	620	58572	900	1850	58584	1500	3090
58561	350	720	58573	950	1960	58585	1600	3300
58562	400	820	58574	1000	2060	58586	1700	3500
58563	450	930	58575	1050	2160	58587	1800	3710
58564	500	1030	58576	1100	2270	58588	1900	3910
58565	550	1130	58577	1150	2370	58589	2000	4120
58566	600	1240	58578	1200	2470			

Further dimensions on request.



### Tolerances and characteristics:

Holes H8  
 Hole distance 0,02  
 Length dimension JS9  
 Material: Alu F 35  
 Surface protection: anodized natural  
 Outer surfaces unmachined,



## AF 40 Open

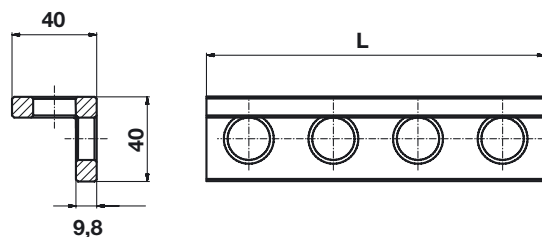
L - Profile

AF 40 Open, 40x40



No.	l	g	No.	l	g	No.	l	g
58100	80	60	58119	840	520	58138	2080	1250
58101	120	80	58120	880	530	58139	2160	1300
58102	160	100	58121	920	550	58140	2200	1320
58103	200	120	58122	960	570	58141	2280	1370
58104	240	150	58123	1000	600	58142	2360	1420
58105	280	170	58124	1080	650	58143	2400	1440
58106	320	200	58125	1120	670	58144	2520	1510
58107	360	230	58126	1200	720	58145	2760	1660
58108	400	250	58127	1240	740	58146	2800	1680
58109	440	270	58128	1280	770	58147	2880	1730
58110	480	290	58129	1320	790	58148	2960	1780
58111	520	310	58130	1400	840	58149	3000	1800
58112	560	330	58131	1520	910	58150	3200	1920
58113	600	360	58132	1600	960	58151	3320	1990
58114	640	400	58133	1680	1010	58152	3360	2020
58115	680	420	58134	1760	1060	58153	3520	2110
58116	720	450	58135	1800	1080	58154	3600	2160
58117	760	470	58136	1920	1150	58155	4000	2400
58118	800	500	58137	2000	1200	58156	4400	2640
						58157	4800	2880

Further dimensions on request.



### Tolerances

#### and characteristics:

Holes H8

Hole distance 0,02

Length dimension JS9

Material: Alu F 35

Surface protection:

anodized natural

Outer surfaces unmachined,



# AF 40 Open

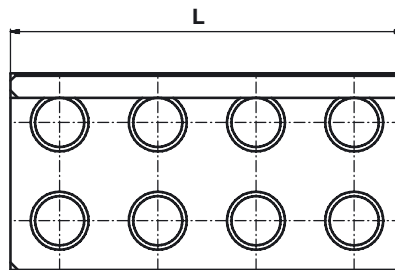
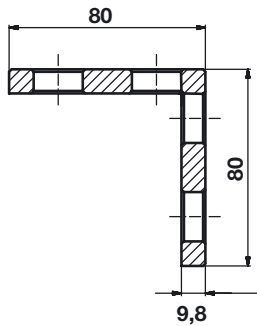
L - Profile

AF 40 Open, 80x80

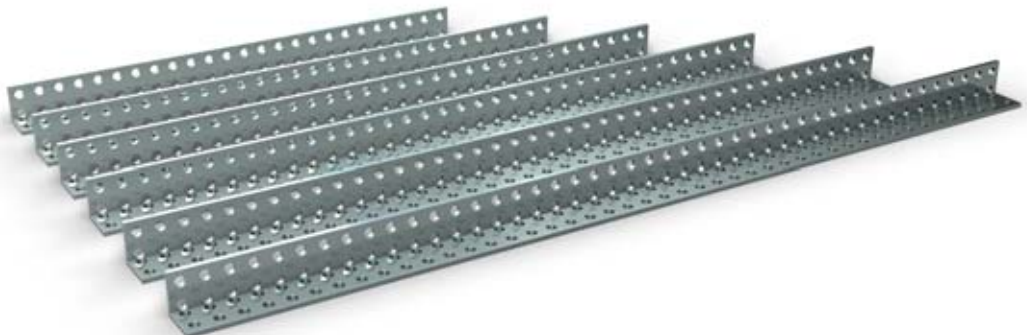


No.	l	g	No.	l	g	No.	l	g
58158	80	240	58177	840	2520	58196	2080	6240
58159	120	360	58178	880	2640	58197	2160	6480
58160	160	480	58179	920	2760	58198	2200	6600
58161	200	600	58180	960	2880	58199	2280	6840
58162	240	720	58181	1000	3000	58200	2360	7080
58163	280	840	58182	1080	3240	58201	2400	7200
58164	320	960	58183	1120	3360	58202	2520	7560
58165	360	1080	58184	1200	3600	58203	2760	8280
58166	400	1200	58185	1240	3720	58204	2800	8400
58167	440	1320	58186	1280	3840	58205	2880	8640
58168	480	1440	58187	1320	3960	58206	2960	8880
58169	520	1560	58188	1400	4200	58207	3000	9000
58170	560	1680	58189	1520	4560	58208	3200	9600
58171	600	1800	58190	1600	4800	58209	3320	9960
58172	640	1920	58191	1680	5040	58210	3360	10080
58173	680	2040	58192	1760	5280	58211	3520	10560
58174	720	2160	58193	1800	5400	58212	3600	10800
58175	760	2280	58194	1920	5760	58213	4000	12000
58176	800	2400	58195	2000	6000	58214	4400	13200
						58215	4800	14400

Further dimensions on request.



**Tolerances and characteristics:**  
 Holes H8  
 Hole distance 0,02  
 Length dimension JS9  
 Material: Alu F 35  
 Surface protection:  
 anodized natural  
 Outer surfaces  
 unmachined,



## AF 40 Open

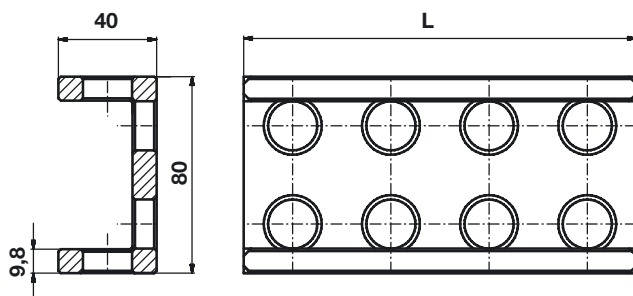
### U - Profile

### AF 40 Open, 40x80



No.	l	g	No.	l	g	No.	l	g
58216	80	240	58235	840	2520	58254	2080	6240
58217	120	360	58236	880	2640	58255	2160	6480
58218	160	480	58237	920	2760	58256	2200	6600
58219	200	600	58238	960	2880	58257	2280	6840
58220	240	720	58239	1000	3000	58258	2360	7080
58221	280	840	58240	1080	3240	58259	2400	7200
58222	320	960	58241	1120	3360	58260	2520	7560
58223	360	1080	58242	1200	3600	58261	2760	8280
58224	400	1200	58243	1240	3720	58262	2800	8400
58225	440	1320	58244	1280	3840	58263	2880	8640
58226	480	1440	58245	1320	3960	58264	2960	8880
58227	520	1560	58246	1400	4200	58265	3000	9000
58228	560	1680	58247	1520	4560	58266	3200	9600
58229	600	1800	58248	1600	4800	58267	3320	9960
58230	640	1920	58249	1680	5040	58268	3360	10080
58231	680	2040	58250	1760	5280	58269	3520	10560
58232	720	2160	58251	1800	5400	58270	3600	10800
58233	760	2280	58252	1920	5760	58271	4000	12000
58234	800	2400	58253	2000	6000	58272	4400	13200
						58273	4800	14400

Further dimensions on request.



### Tolerances

#### and characteristics:

Holes H8

Hole distance 0,02

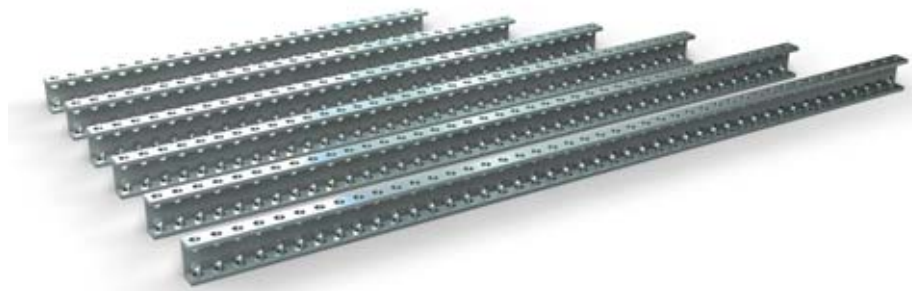
Length dimension JS9

Material: Alu F 35

Surface protection:

anodized natural

Outer surfaces unmachined,





# AF 40 Open

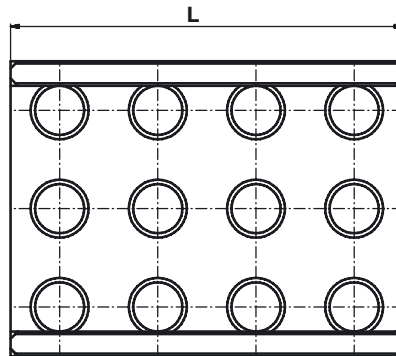
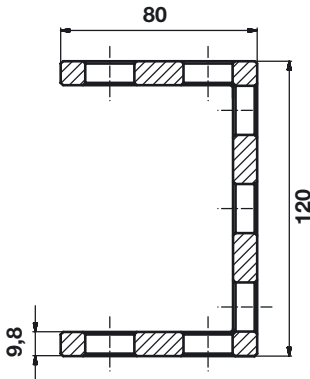
## U - Profile

### AF 40 Open, 80x120



No.	l	g	No.	l	g	No.	l	g
58332	80	420	58351	840	4400	58370	2080	10900
58333	120	630	58352	880	4610	58371	2160	11320
58334	160	840	58353	920	4820	58372	2200	11530
58335	200	1050	58354	960	5030	58373	2280	11950
58336	240	1260	58355	1000	5240	58374	2360	12370
58337	280	1470	58356	1080	5660	58375	2400	12580
58338	320	1680	58357	1120	5870	58376	2520	13200
58339	360	1890	58358	1200	6290	58377	2760	14460
58340	400	2100	58359	1240	6500	58378	2800	14670
58341	440	2310	58360	1280	6710	58379	2880	15090
58342	480	2520	58361	1320	6920	58380	2960	15510
58343	520	2720	58362	1400	7340	58381	3000	15720
58344	560	2930	58363	1520	7960	58382	3200	16770
58345	600	3140	58364	1600	8380	58383	3320	17400
58346	640	3350	58365	1680	8800	58384	3360	17610
58347	680	3560	58366	1760	9220	58385	3520	18440
58348	720	3770	58367	1800	9430	58386	3600	18860
58349	760	3980	58368	1920	10060	58387	4000	20960
58350	800	4190	58369	2000	10480	58388	4400	23060
						58389	4800	25150

Further dimensions on request.

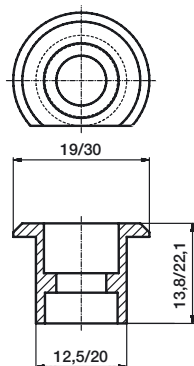
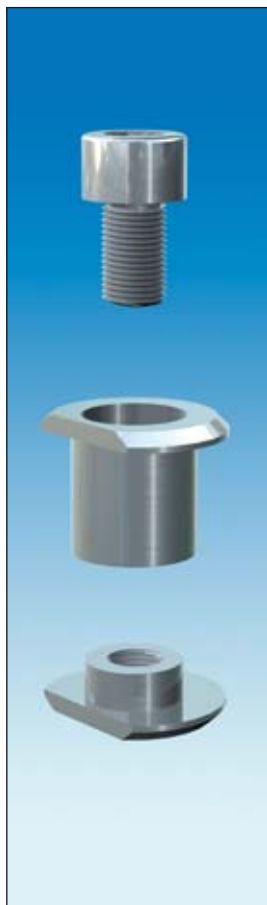


#### Tolerances

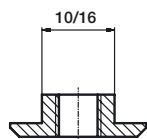
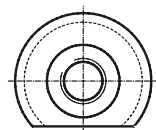
#### and characteristics:

- Holes H8
- Hole distance 0,02
- Length dimension JS9
- Material: Alu F 35
- Surface protection: anodized natural
- Outer surfaces unmachined,





Fixing washer 1

Fixing washer 2  
M6/M10

## # 95454

**Connection set AF 25 Open,**

3-pcs., comprising of:

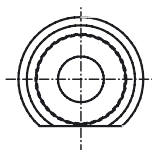
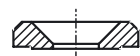
No.	Name	Dim
58007	Fixing washer 1	ø19 x 13,8
58012	Fixing washer 2	ø19, M6
11545	Hex socket head screw	M6x8 DIN 912 A2

## # 94992

**Connection set AF 40 Open,**

3-pcs., comprising of:

No.	Name	Dim
58008	Fixing washer 1	ø30 x 22,1
58013	Fixing washer 2	ø30, M10
13003	Hex socket head screw	M10x16 DIN 912 A2

**Countersunk screw,**

DIN 7991 A2

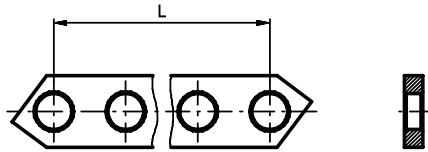
No.	System	Dim
12105	AF25 Open	M6x12
10049	AF40 Open	M10x20

**Countersunk washer,**

No.	System	g
58002	AF25 Open	-
58003	AF40 Open	1

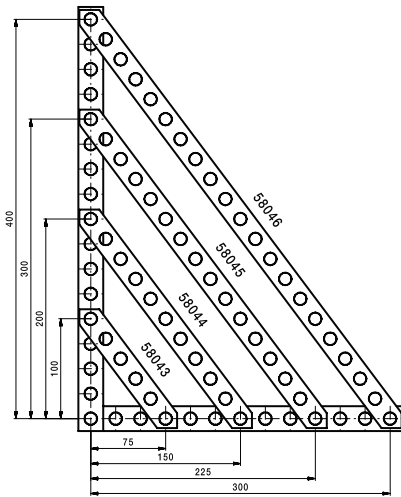
### Struts AF Open

No.	System	L	Dim	g	No.	System	L	Dim	g
58043	AF25 Open	125	6x25	180	58047	AF40 Open	200	10x40	180
58044	AF25 Open	250	6x25	330	58048	AF40 Open	400	10x40	330
58045	AF25 Open	375	6x25	480	58049	AF40 Open	600	10x40	480
58046	AF25 Open	500	6x25	650	58050	AF40 Open	800	10x40	650



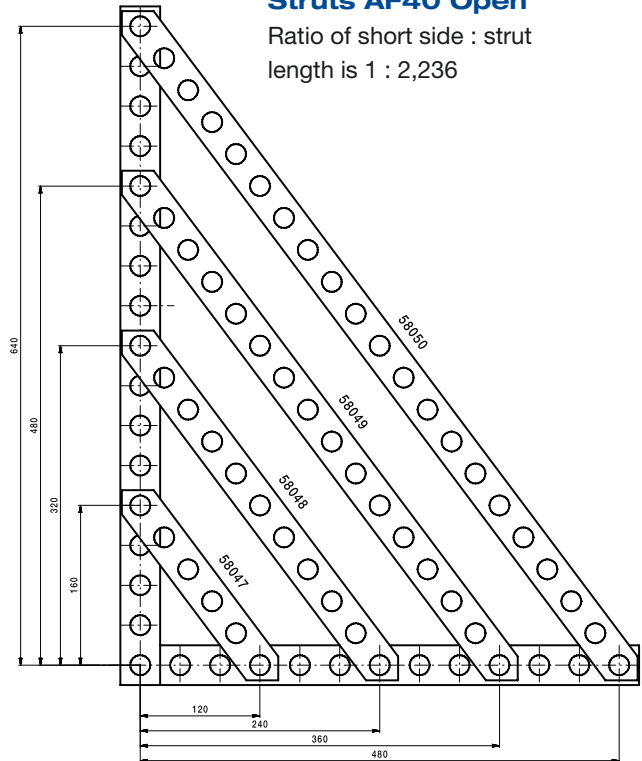
### Struts AF25 Open

Ratio of short side : strut length is 1 : 2,236



### Struts AF40 Open

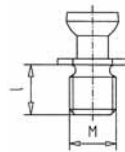
Ratio of short side : strut length is 1 : 2,236



### Bolt, for thread AF25

shortened

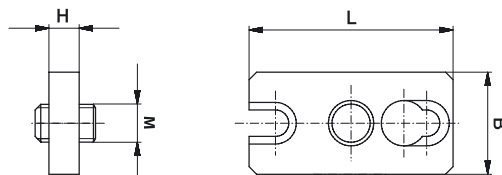
No.	System	Dim	g
21500	AF25 Open	M6	2
20347	AF40 Open	M10	10



### Coupling plate, twice

complete with threaded pin

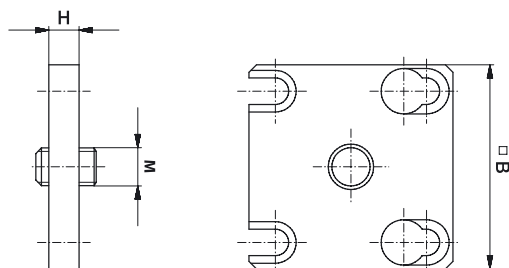
No.	System	Dim	g
95280	AF25 Open	8x27x54, M6	10
95281	AF40 Open	8x27x54, M10	20



### Coupling plate, fourfold

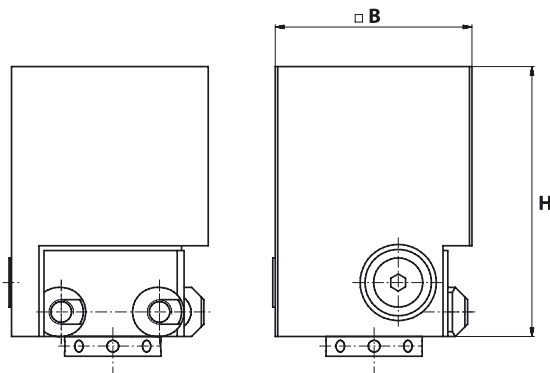
complete with threaded pin

No.	System	Dim	g
95285	AF25 Open	8x54x54, M6	10
95286	AF40 Open	8x54x54, M10	30



**3D Adjustment block** with integrated contour block, adjusting range  $\pm 2\text{mm}$

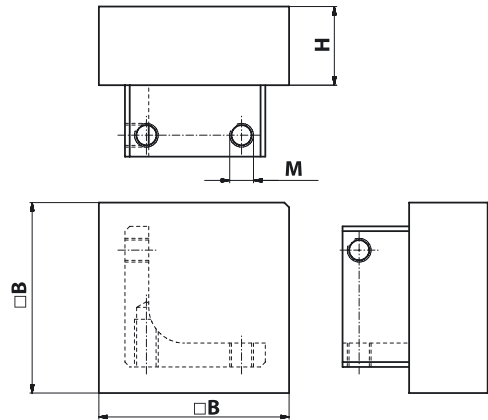
No.	System	Dim	g
95455	AF25 Open	50x50x70	520
95456	AF40 Open	80x80x110	1970



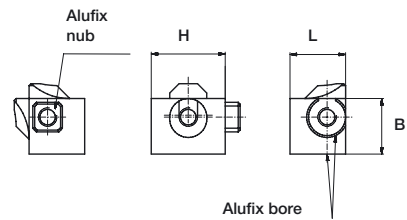
**Contour block,**

pre-machined

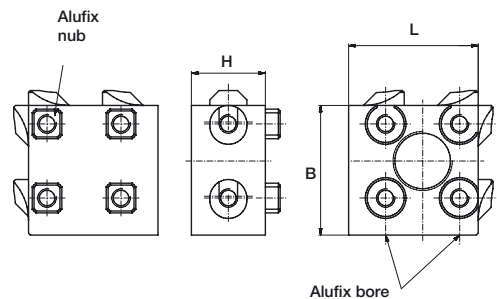
No.	System	Dim	g
58592	AF25 Open	50x50	220
58593	AF40 Open	80x80	790


**Connector AF Open, simple**

No.	System	Dim	g
58447	AF25 Open	19x19x25	--
58448	AF40 Open	30x30x40	10

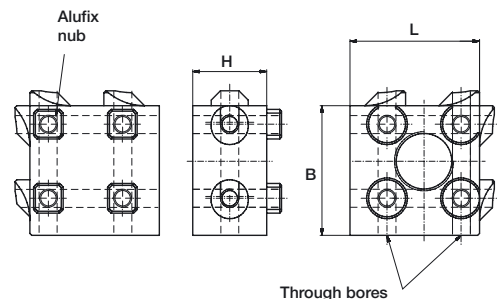

**Connector AF Open, double**

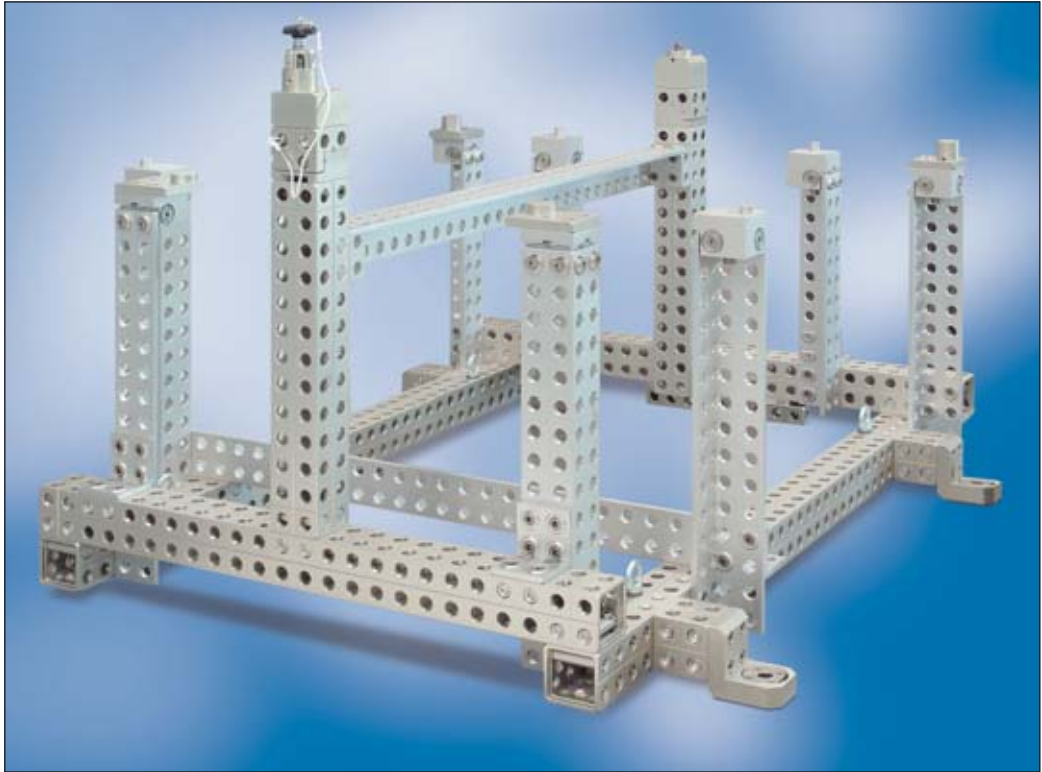
No.	System	Dim	g
58022	AF25 Open	25x44x44	140
58032	AF25 Open	50x44x44	290
58023	AF40 Open	40x70x70	450
58033	AF40 Open	80x70x70	900


**Connector AF Open, double**

with through bore

No.	System	Dim	g
58608	AF25 Open	25x44x44, $\varnothing 6,6$	290
58609	AF40 Open	40x70x70, $\varnothing 11$	900





Measuring fixtures using ALUFIX Classic and ALUFIX Open

